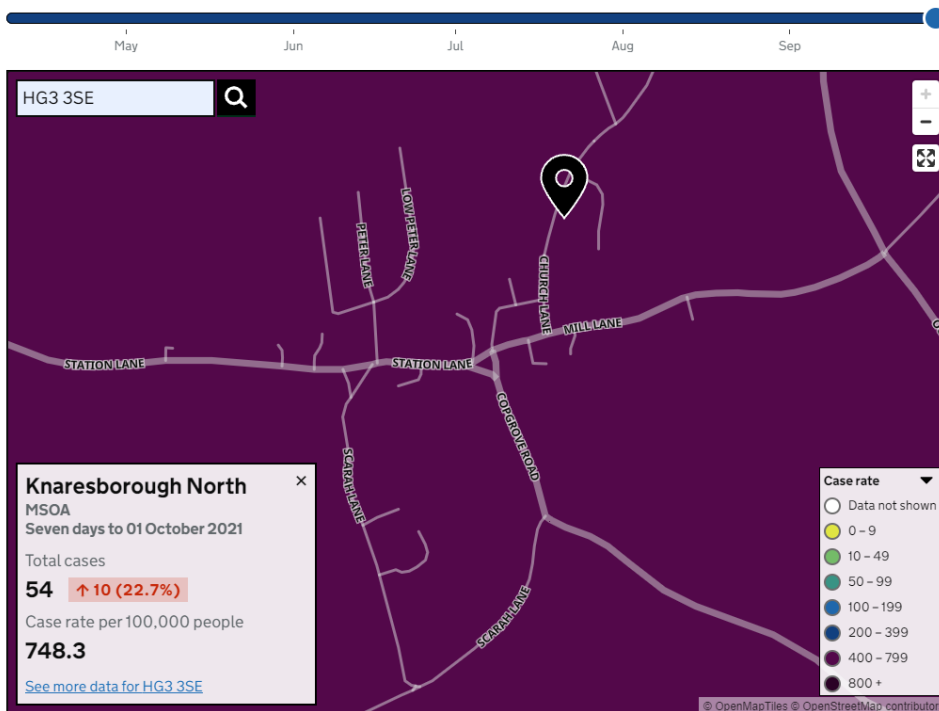


Case rate per 100,000 people for 7-day period ending on 1 October 2021:



[See more data for HG3 3RY](#)

Source: <https://coronavirus.data.gov.uk/details/interactive-map/cases>

We've been following the local case rates of COVID 19 on the gov.uk website and have become very concerned that our small area (Burton Leonard, Scotton, part of Staveley) has had high and rapidly rising rates for the past week or so. Our rate is much higher than the national average and significantly higher than Harrogate as a whole. We guess this is associated with the return to school and the slow roll out of vaccinations for secondary pupils but it is a worry for us all. COVID19 may be experienced as a mild illness but we know it can affect previously healthy people of all ages very badly. Whereas most older adults are double vaccinated, the most vulnerable are only just being called for their booster jabs. Children can pass it on to siblings, parents and grandparents, even if they are showing no symptoms.

As you know the Village Hall has now reopened and all normal bookings have resumed. However, we want to ensure that people remain safe and have given all users of the hall guidance on how the dangers of infection with COVID 19, an airborne disease, can be significantly reduced when using the premises. In the hall we are displaying notices regarding ventilation, social distancing and sanitisation but now we also urge all users except the youngest to wear masks to safeguard everyone.

Philip Baldwin

Chair, Burton Leonard Village Hall Committee